

Fishing Guide 2024

25 Doubs Fishing and Aquatic Ecosystem Protection Federation

2 MAGASINS AU BORD DE L'EAU
NOS ÉQUIPES DE PASSIONNÉS
À VOTRE SERVICE !
CAPERLAN

NOS SERVICES :
 CARTE DE PÊCHE
 VENTE D'APPÂTS VIVANTS
 CARTE FIDÉLITÉ GRATUITE

NOS PRODUITS POUR :
 LA PÊCHE AU COUP
 LA PÊCHE AU LEURE
 LA PÊCHE DE LA CARPE
 LA PÊCHE DE LA TRUITE

BESANÇON
 ZAC CHATEAUFARINE
 9H-19H30

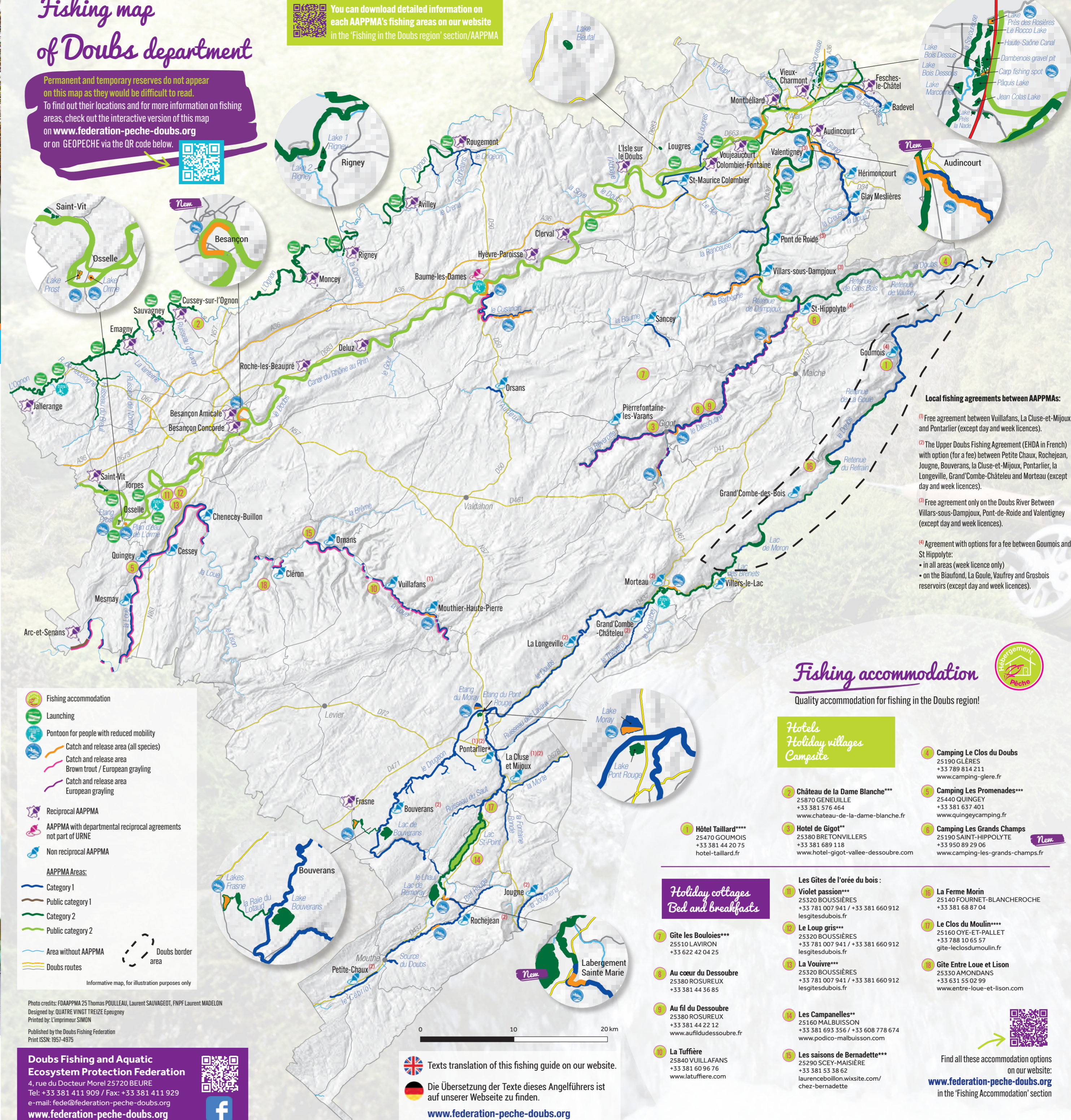
PONTARLIER
 ZAC DE LA GOUILLES DES SAUGES
 9H-19H

DECATHLON

Fishing map of Doubs department

Permanent and temporary reserves do not appear on this map as they would be difficult to read. To find out their locations and for more information on fishing areas, check out the interactive version of this map on www.federation-peche-doubs.org or on GEOPECHE via the QR code below.

You can download detailed information on each AAPPMA's fishing areas on our website in the 'Fishing in the Doubs region' section/AAPPMA



Local fishing agreements between AAPPMA's:

- Free agreement between Vuillafans, La Cluse-et-Mijoux and Pontarlier (except day and week licences).
- The Upper Doubs Fishing Agreement (EHDA in French) with option (for a fee) between Petite Chau, Rochejean, Jougne, Bouverans, la Cluse-et-Mijoux, Pontarlier, la Longeville, Grand'Combe-Château and Morteau (except day and week licences).
- Free agreement only on the Doubs River Between Villars-sous-Dampjoux, Pont-de-Roide and Valentigney (except day and week licences).
- Agreement with options for a fee between Goumois and St Hippolyte:
 - in all areas (week licence only)
 - on the Biaufond, La Goule, Vautre and Grosbois reservoirs (except day and week licences).

Fishing accommodation

Quality accommodation for fishing in the Doubs region!

Hotels Holiday villages Campsites

- 1** Camping Le Clos du Doubs
25190 GLÈRES
+33 789 814 211
www.camping-glere.fr
- 2** Château de la Dame Blanche***
25870 GENEUILLE
+33 381 576 464
www.chateau-de-la-dame-blanche.fr
- 3** Hôtel Taillard****
25470 GUMOIS
+33 381 44 20 75
hotel-taillard.fr
- 4** Camping Les Promenades***
25440 QUINGEY
+33 381 637 401
www.quingeycamping.fr
- 5** Hotel de Gigot**
25380 BRETONVILLERS
+33 381 689 118
www.hotel-gigot-vallee-dessoubre.com
- 6** Camping Les Grands Champs
25190 SAINT-HIPPOLYTE
+33 950 89 29 06
www.camping-les-grands-champs.fr

Les Gîtes de l'orée du bois :

- 1** Violet passion***
25320 BOUSSIÈRES
+33 781 007 941 / +33 381 660 912
lesgitesdubois.fr
- 2** Le Loup gris***
25320 BOUSSIÈRES
+33 781 007 941 / +33 381 660 912
lesgitesdubois.fr
- 3** La Vouivre***
25320 BOUSSIÈRES
+33 781 007 941 / +33 381 660 912
lesgitesdubois.fr
- 4** Les Campanelles**
25160 MALBUISSON
+33 381 693 356 / +33 608 778 674
www.podicco-malbuissou.com
- 5** Les saisons de Bernadette***
25290 SCEY-MAISIÈRE
+33 381 53 38 62
laurenceboillon.wixsite.com/chez-bernadette
- 6** La Ferme Morin
25140 FOURNET-BLANCHEROCHE
+33 381 68 87 04
- 7** Le Clos du Moulin***
25160 OYE-ET-PALLET
+33 788 10 65 57
gite-leclosdumoulin.fr
- 8** Gîte Entre Loue et Lison
25330 AMONDANS
+33 331 55 02 99
www.entre-loue-et-lison.com

Holiday cottages Bed and breakfasts

- 1** Gîte les Bouloies***
25510 LAVIRON
+33 622 42 04 25
- 2** Au cœur du Dessoubre
25380 ROSUREUX
+33 381 44 36 85
- 3** Au fil du Dessoubre
25380 ROSUREUX
+33 381 44 22 12
www.aufiludessoubre.fr
- 4** La Tuiffière
25840 VUILLAFANS
+33 381 60 96 76
www.latuiffiere.com

A word from the President

Dear fisher friends,

A new year has gone by; it was once again event-packed. Our Federation has strengthened its ongoing fight against all kinds of breaches to our waterways. Since my arrival, my team and I decided to implement profound changes in the way we approach environmental litigation.

After almost two years, great accomplishments have been achieved in this area. The actions carried out started giving results in 2023, with the first sentences being imposed. I will not forget to give praise to the work of lawyers in the environmental field.

In parallel, our federal team works tirelessly to acquire more scientific knowledge on the state of fish populations. This expertise is paramount to restore waterways, whether they are managed by our partners or directly by the Federation: a good example in 2023 is the remeandering of the upstream part of the Bénusse stream.

These actions and others have a price, thus I take full responsibility for the increase in membership fees. Thanks to the efforts of our members, we can carry out the vast work we face in the current context and act as a proactive force in all areas of our concern.

We must not lose confidence; if we fishers remain united in solidarity, we will turn things around for future generations, but we must persevere. I am pleased with the growing interest in our hobby among young generations. Fishers, you are crucial partners, without you, nothing would be possible.

My board of directors, our partners, and I wish you a fishing season with bumper catches and precious moments along the riverbanks. I wish you all a wonderful fishing season.

Philippe GROSSO
 President of the Doubs Fishing and Aquatic Ecosystem Protection Federation

Univers Pêche

Du lundi au jeudi :
 09h00 à 12h00
 13h30 à 19h00
 Vendredi et samedi :
 09h00 à 19h00

Zac de Chateaufarine - 7b Chemin des 4 Journaux
 Tél : 09 83 70 56 40 - www.universpeche25.fr

TENSION ATTENTION

Parce que votre ligne de pêche n'a pas forcément besoin de toucher une ligne électrique pour provoquer un accident mortel.

Protégez-vous du risque électrique. Découvrez tous nos conseils sur Tension-Attention.fr

ENEDIS **RTE**

- Fishing accommodation
 - Launching
 - Pontoon for people with reduced mobility
 - Catch and release area (all species)
 - Catch and release area Brown trout / European grayling
 - Catch and release area European grayling
 - Reciprocal AAPPMA
 - AAPPMA with departmental reciprocal agreements not part of URNE
 - Non reciprocal AAPPMA
 - AAPPMA Areas:
 - Category 1
 - Public category 1
 - Category 2
 - Public category 2
 - Area without AAPPMA
 - Doubs routes
 - Doubs border area
- Informative map, for illustration purposes only

Photo credits: FDAAPPMA 25 Thomas POUILLEAU, Laurent SAUVAGEOT, FNPF Laurent MADELON
 Designed by: QUATRE VINGT TREIZE Epeugney
 Printed by: L'imprimeur SIMON
 Published by the Doubs Fishing Federation
 Print ISSN: 1957-4975

Doubs Fishing and Aquatic Ecosystem Protection Federation
 4, rue du Docteur Morel 25720 BEURE
 Tel: +33 381 411 909 / Fax: +33 381 411 929
 e-mail: fede@federation-peche-doubs.org
www.federation-peche-doubs.org

Texts translation of this fishing guide on our website.
 Die Übersetzung der Texte dieses Angelführers ist auf unserer Webseite zu finden.
www.federation-peche-doubs.org

